

# THE PENALTIES

Possession or consumption of Methamphetamine

Up to **10 years of imprisonment** or **\$\$20,000 fine** or **BOTH**

Illegal traffic, import or export of Methamphetamine of more than 250 grams

**DEATH**



## CENTRAL NARCOTICS BUREAU (CNB)

If you have been approached to try drugs or wish to report any information, please contact:

The Duty Officer  
Central Narcotics Bureau  
Tel: 1800-325-6666

For more information on anti-drug events and activities, please visit our website at

[www.cnb.gov.sg](http://www.cnb.gov.sg)

Singapore Anti-Narcotics Association (SANA)  
If you need help, please call 1800-733-4444  
(Daily, 7.30am - midnight)

**'ICE' ABUSE  
IMPRISONS YOU  
FOR LIFE!  
DON'T TRY IT!**



**ALSO COMMONLY  
KNOWN AS**

# EFFECTS & DANGERS

- Increased heart rate and body temperature
- Fits, stroke and death
- Damage to heart and nerves
- Liver and kidney diseases
- Abnormal behaviour with mood swings, confusion, delusion and hallucination
- Anxiety and irritability

## What's this?

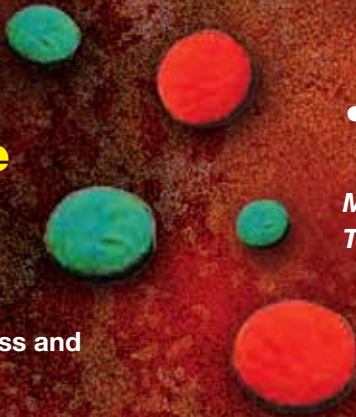
### Methamphetamine

usually comes in crystallised form known as Methamphetamine Hydrochloride. It is more commonly known as 'Ice' in Singapore. It is a strong stimulant, which is odourless and colourless.

Methamphetamine also comes in tablet form known as 'Ya ba'. The stimulant powder in 'Ya ba' is produced from the ephedrine plant. Most of the 'Ya ba' tablets found are embossed with the 'WY' logo and are green or orange in colour.

Methamphetamine has a very strong effect on the central nervous system and is highly addictive. The abuser feels anxious and restless which can lead to violent behaviour.

*Methamphetamine  
Tablets*

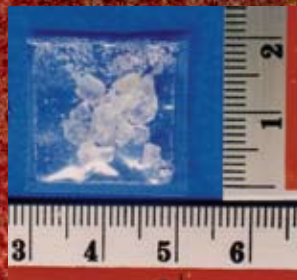


*Methamphetamine Powder*



## WITHDRAWAL Symptoms:

- Extreme tiredness and hunger
- Anxiety, depression and irritability
- Insomnia (difficulty in sleeping)



*Methamphetamine Crystals, or 'Ice'*

ALSO COMMONLY  
KNOWN AS  
METHAMPHETAMINE  
'ICE' / GLASS  
CRYSTAL / SPEED / 'YA BA'

