

NEW PSYCHOACTIVE SUBSTANCES DRUGS IN DISGUISE!

NPS contain ingredients which mimic the same effects as controlled drugs such as 'Ice' or Cannabis.

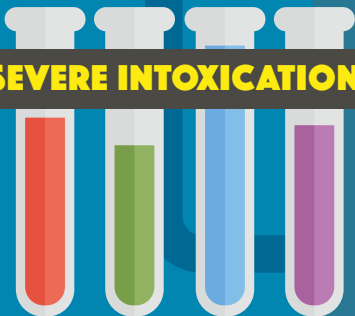


EFFECTS AND DANGERS

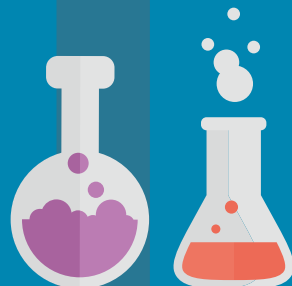
NPS have unknown, dangerous toxicology effects and are as addictive and harmful as controlled drugs.

ABUSE CAN LEAD TO

SEVERE INTOXICATION



SEVERE TOXIC REACTION LEADING TO DEATH



ADVERSE CARDIOVASCULAR PROBLEMS

HALLUCINATION



RENAL FAILURE



SEIZURES



PARANOIA

PENALTIES

Possession or consumption of NPS:
up to 10 years of imprisonment, or \$20,000 fine, or both.

