

# Meth at Work



Oh, boy! Feels so good to be back in this place!

I'm ready to party! Time to turn this human body upside down again!

OVERRIDE



Hey, everyone! Did you miss me?

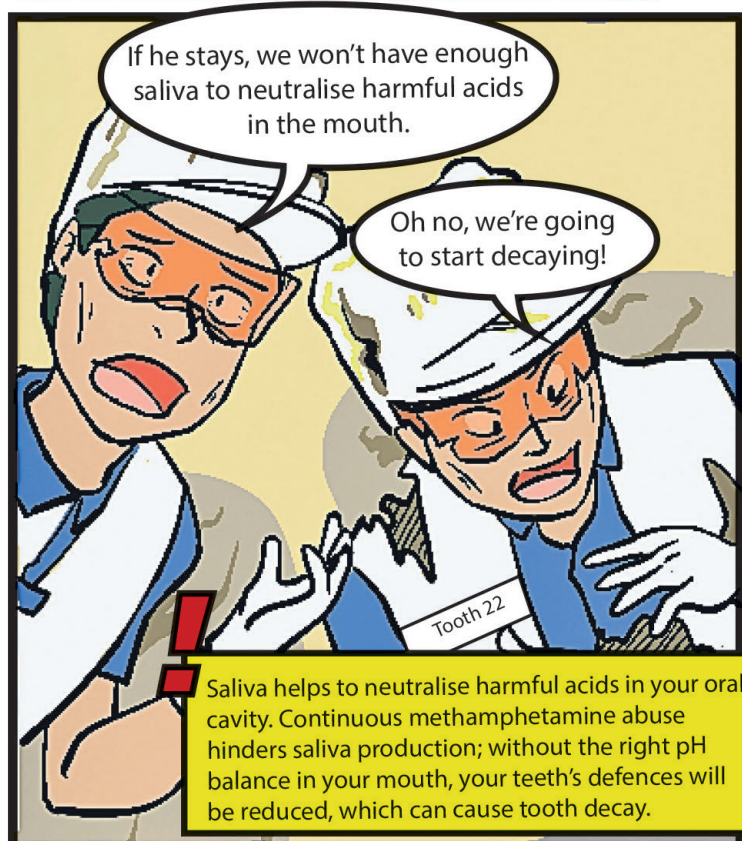
OK, gonna check my Teeth Squad first. How are they liking the taste of my Meth groupies?

Hey there, buddies. Aww, aren't you guys having fun?

I hate it whenever Meth comes. He always brings along a crowd to block the Salivary Glands Parkway.

This is bad! We're experiencing a decrease in saliva flow and this dry spell will make us lose our pH balance soon!

Tooth 15



If he stays, we won't have enough saliva to neutralise harmful acids in the mouth.

Oh no, we're going to start decaying!

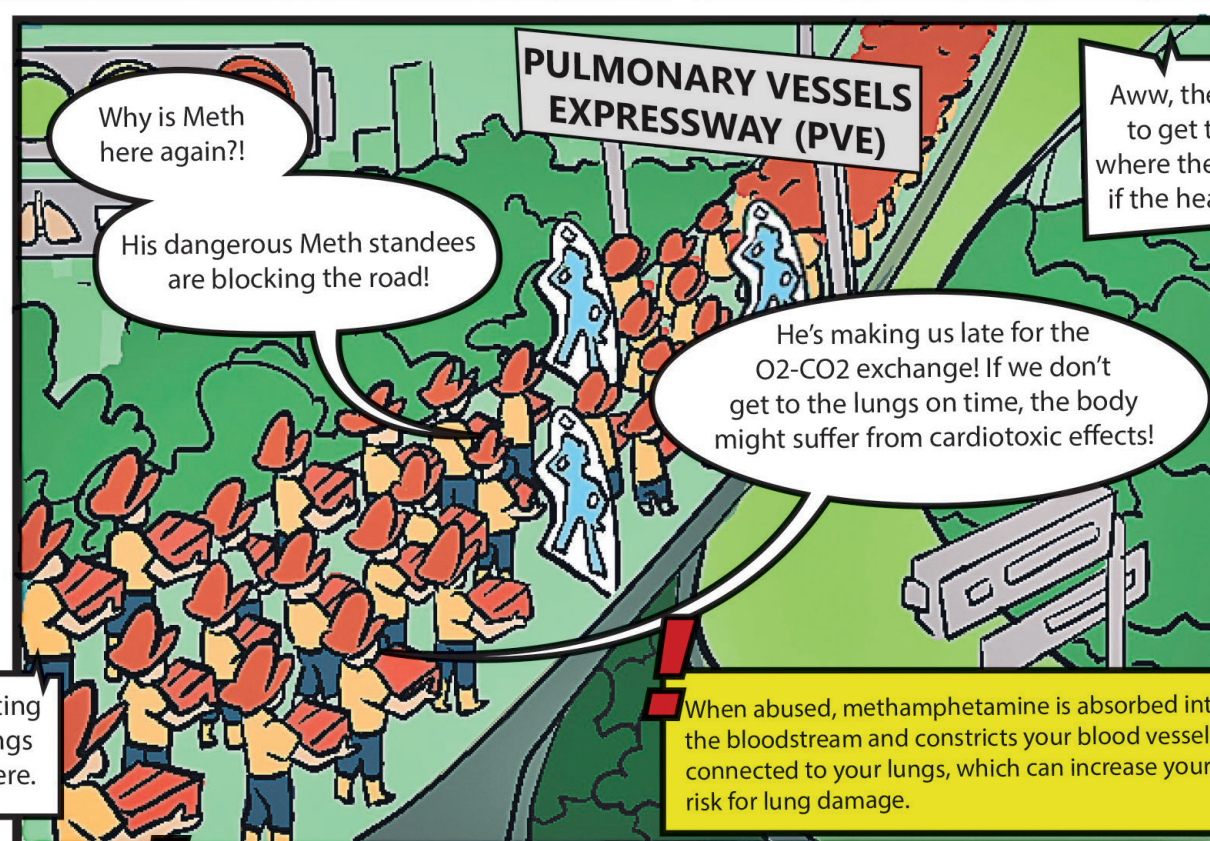
Tooth 22

Saliva helps to neutralise harmful acids in your oral cavity. Continuous methamphetamine abuse hinders saliva production; without the right pH balance in your mouth, your teeth's defences will be reduced, which can cause tooth decay.



Muahaha! This is just the start of my party taking over the body!

I'm sure the PVE is heating up too! Let's see if things are breaking down there.

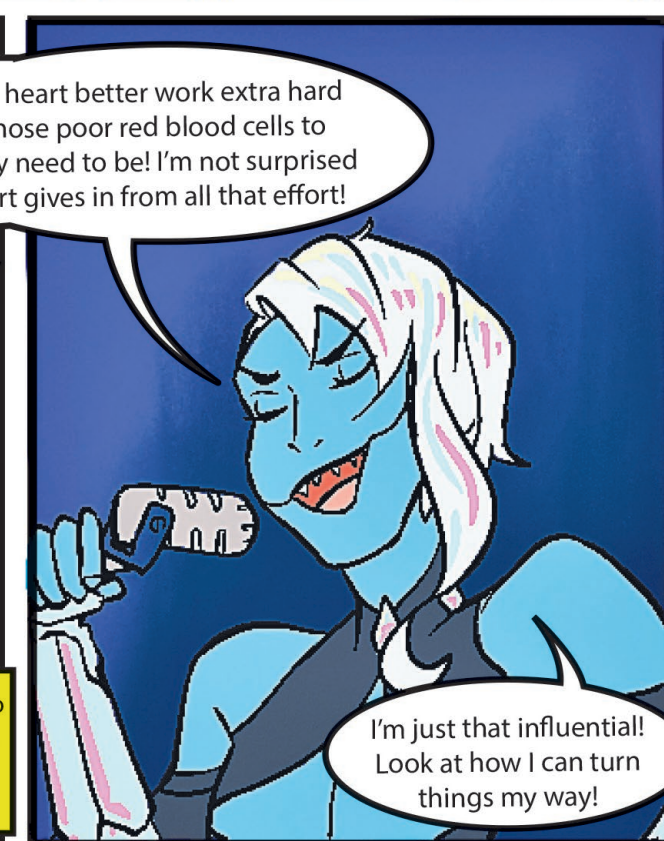


Why is Meth here again?!

His dangerous Meth standees are blocking the road!

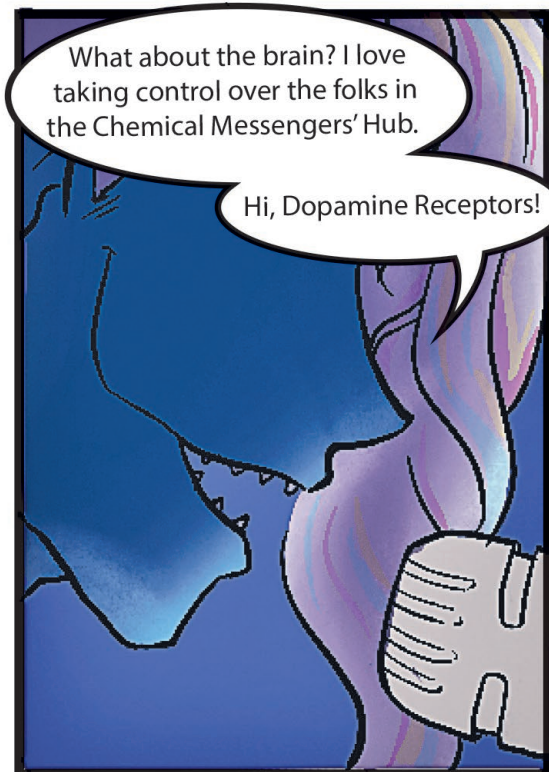
He's making us late for the O2-CO2 exchange! If we don't get to the lungs on time, the body might suffer from cardiotoxic effects!

When abused, methamphetamine is absorbed into the bloodstream and constricts your blood vessels connected to your lungs, which can increase your risk for lung damage.



Aww, the heart better work extra hard to get those poor red blood cells to where they need to be! I'm not surprised if the heart gives in from all that effort!

I'm just that influential! Look at how I can turn things my way!



What about the brain? I love taking control over the folks in the Chemical Messengers' Hub.

Hi, Dopamine Receptors!



Where's that 'high' you promised us, Meth? Why do we feel so terrible?

These dopamine receptors receive neurotransmitters connected to pleasure and send signals to your brain. Disruption of your brain chemistry is an effect of long-term methamphetamine abuse, which can damage your pleasure centres.

Yeah, the last group you sent was not enough to keep us happy. We need more...

Can you send more of your friends here, please?



Man, you guys really look dead, like zombies.

What did you do to us?!

Now you can't function without me anymore!



What about you?

Would you like me to throw you a party?



## What's new?

Illicit drugs such as methamphetamine and new psychoactive substances (NPS) cause great harm to your body. Find out if they're really worth the 'high' in a conversation between an ex-abuser and a student.



Scan to watch the video.

## Giveaway

Want to win an exclusive DrugFreeSG goodie bag? Tell us one harmful effect of methamphetamine on your body at CNB\_Community\_Partnership@cnb.gov.sg by Sep 30, 2021! Winners will be contacted via the e-mail address used to submit their answer.

BROUGHT TO YOU BY

